

# LED Performance Squarely on the Mark

Form Ten Square LED Area Luminaires



**PHILIPS**

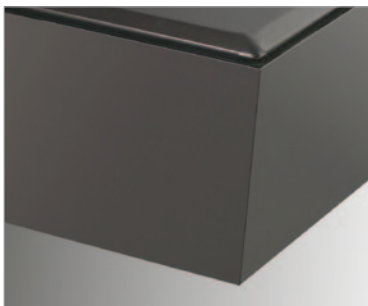




## Being square is back in fashion

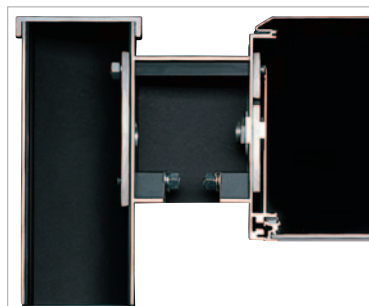
In 1969, Gardco Lighting changed outdoor area illumination forever when it introduced the first full cutoff luminaire - the Form Ten Square. Today, the shape that started it all redefines itself for a new generation by incorporating state-of-the-art, high performance LEDs.

Available in 14" and 19" pole and wall mounted configurations, the Philips Gardco extruded (EH) and formed (H) LED luminaires retain the features and benefits that made them industry leaders in site lighting. Visually appealing half cube proportions, toolless access to the optics and driver assembly, memory retentive silicone gasketing and rotatable optics are but a few of the qualities that helped define the industry leader.



### Housing Construction

The Form Ten Square LED luminaires are available in two distinct housing construction styles. The "EH" utilizes rugged aluminum extrusions with mitered corners and allow for an anodized finish. "H" style housings are constructed of formed aluminum and are available with a painted finish.



### Mounting

The double-nut-through-bolt makes it impossible to misalign the luminaire and pole. Note the integrity of the internal construction and aluminum extrusions, which provide remarkable strength-to-weight ratios.



### Rotatable Optics

Philips Gardco pioneered the concept of rotatable optics – which enable pole orientation and light distribution to be independent of one another. It also enables reorientation of the optical system, should traffic patterns change.

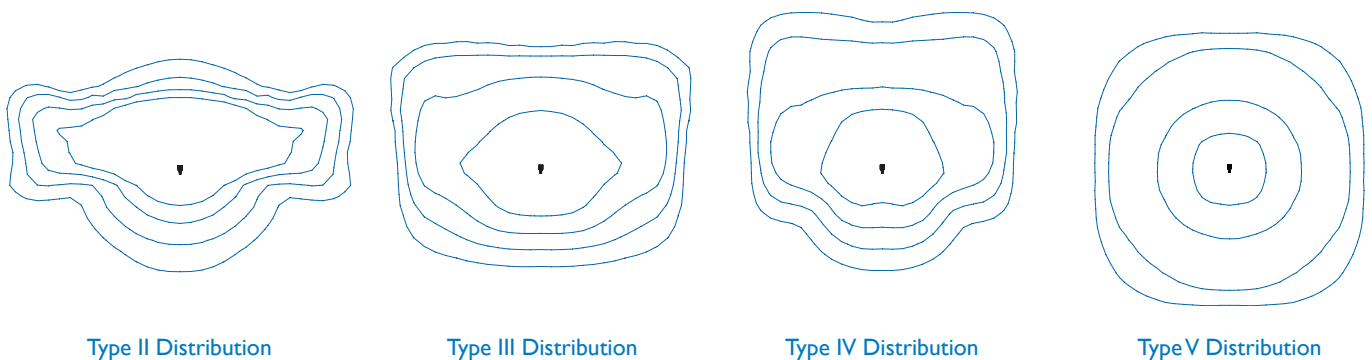


## The shape that started it all has performance to spare

The main area where Philips Gardco luminaires excel is in performance. The Form Ten Square luminaire employs a sophisticated high output Class 1 LED array system that delivers one of four unique distribution patterns. This system delivers increased light output and a longer lifespan than conventional HID sources, while consuming a small fraction of the energy. Improved visibility, higher efficiency and compact size mean that fewer luminaires are needed to light areas to desired levels, resulting in substantial savings and reduced environmental impact in both the short and long term.

All told, these systems use up to 50% less energy than traditional outdoor lighting systems, and typically lower the cost of energy up to 40% when compared to most systems in use today. These high performance systems deliver uniform illumination free from hot spots and striations even with wide pole spacings.

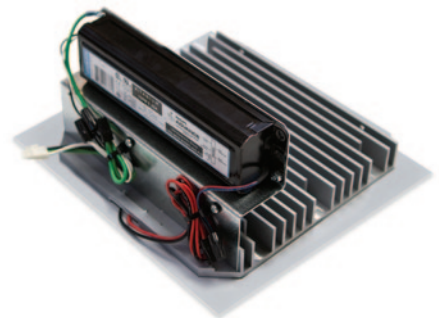
Philips Gardco's Applications Engineering Department stands ready to assist with site lighting analysis and development.



### Retrofit Kits

Do you already have 14" or 19" Form Ten Square luminaires on your site? Retrofit Kits are an excellent way to equip your existing luminaires with high performance LED arrays. They allow for a quick and efficient changeout, saving time, expense and ultimately energy.

The kits contain everything needed to fully convert the standard 14" and 19" Form Ten Square to any of the available LED wattages and distributions. This includes a new reflector pan outfitted with LED arrays and integral driver(s).



# Form Ten Square LED Ordering

PREFIX	MOUNTING	DISTRIBUTION	LED WATTAGE	LED SELECTION	VOLTAGE	FINISH	OPTIONS
EH14L	1	3	85LA	NW	UNIV	BRA	F
See Listing Below	1	2	70LA	CW	UNIV	<i>Formed Units</i>	F
	2	IES Type II	85LA	Cool White	120V through 277V	BRP Bronze Paint	LF
	2@90	3		NW	HVU	BLP Black Paint	PC
	3	IES Type III	110LA	Neutral White	347V through 480V	OC Optional Color	PCR
	3@120	4	160LA	WW		SC Special Color	MF
	4	IES Type IV		Warm White			MU
		5				<i>Extruded Units</i>	AP
		IES Type V				BRA Bronze Anodized	PTF2
						BLA Black Anodized	PTF3
						NA Natural Anodized	PTF4
						OC Optional Color	SPR
						SC Special Color	SPRH
							SPRA
							SPRAH

Prior to ordering, consult Submittal Data Sheet on [sitelighting.com](http://sitelighting.com) for the most current information, notes and exclusions.

Philips Gardco reserves the right to change materials or modify the design of its product without notification as part of the company's continuing product improvement program.

## PREFIX

### Extruded Housings

14" Square, 70LA and 85LA wattages only

**EH14L** Side Arm Mount -Constant Wattage

**EH14L-DIM** Side Arm Mount - 0-10V Dimming

**BE14L** Wall Mount w/Arm - Constant Wattage

**BE14L-DIM** Wall Mount w/Arm - 0-10V Dimming

**WE14L** Wall Mount - Constant Wattage

**WE14L-DIM** Wall Mount - 0-10V Dimming

19" Square, 110LA and 160LA wattages only

**EH19L** Side Arm Mount -Constant Wattage

**EH19L-DIM** Side Arm Mount - 0-10V Dimming

**BE19L** Wall Mount w/Arm - Constant Wattage

**BE19L-DIM** Wall Mount w/Arm - 0-10V Dimming

**WE19L** Wall Mount - Constant Wattage

**WE19L-DIM** Wall Mount - 0-10V Dimming

### Formed Housings

14" Square, 70LA and 85LA wattages only

**H14L** Side Arm Mount -Constant Wattage

**H14L-DIM** Side Arm Mount - 0-10V Dimming

**BH14L** Wall Mount w/Arm - Constant Wattage

**BH14L-DIM** Wall Mount w/Arm - 0-10V Dimming

**WH14L** Wall Mount - Constant Wattage

**WH14L-DIM** Wall Mount - 0-10V Dimming

19" Square, 110LA and 160LA wattages only

**H19L** Side Arm Mount -Constant Wattage

**H19L-DIM** Side Arm Mount - 0-10V Dimming

**BH19L** Wall Mount w/Arm - Constant Wattage

**BH19L-DIM** Wall Mount w/Arm - 0-10V Dimming

**WH19L** Wall Mount - Constant Wattage

**WH19L-DIM** Wall Mount - 0-10V Dimming

## OPTIONS

**F** Fusing In Head

**LF** In Line/In Pole Fusing

**PC** Photocontrol and Receptacle

**PCR** Photocontrol Receptacle only

**MF** Mast Arm Fitter

**MU** 10° Uptilt Bracket

**AP** Adjustable Knuckle - Pole Mount

**PTF2** Pole Top Fitter - 2 3/8" - 3" diameter

**PTF3** Pole Top Fitter - 3" - 3 1/2" diameter

**PTF4** Pole Top Fitter - 3 1/2" - 4" diameter

**SPR** Surge Protection for 120V through 277V Input

**SPRH** Surge Protection for 347V through 480V Input

**SPRA** Surge Protection for 120V through 277V Input

meeting ANSI C62.41.2

**SPRAH** Surge Protection for 347V through 480V Input

meeting ANSI C62.41.2

## RKLED

Retrofit Kit -LED

for existing Form Ten Round luminaires. Refer to Submittal Data Sheet G200-021 for complete ordering information



1611 Clovis Barker Road  
San Marcos, TX 78666  
512/753-1000  
800/227-0758  
Fax: 512/753-7855  
[sitelighting.com](http://sitelighting.com)

## Philips Gardco Warranty

Philips Gardco luminaires feature a 5 year limited warranty. Philips Gardco LED luminaires with LED arrays feature a 5 year limited warranty covering the LED arrays. See Warranty Information on [sitelighting.com](http://sitelighting.com) for complete details and exclusions.



© 2011 Koninklijke Philips Electronics N.V.  
All Rights Reserved.

Document order number: G100-021/1011