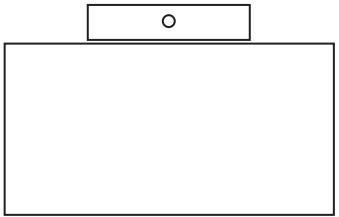


Job:  
 Type:  
 Notes:

# Form 10 Garage

## SCBEH / STSEH / STLEH 19"

The Gardco style SCB, STS and STL ceiling mounted products are sharp cutoff rectilinear luminaires using high intensity discharge lamps up to 400 watts. The units are manufactured from a mitered extruded aluminum and finished in an Architectural Class 1 anodizing. Silicone gasketing throughout excludes moisture, dust and insects. Each luminaire accepts four (4) interchangeable, rotatable precision segmented optical systems. Flat glass lens luminaires provide full cutoff performance. Sag Lens luminaires provide cutoff performance.



<b>PREFIX</b>	<b>DISTRIBUTION</b>	<b>WATTAGE</b>	<b>VOLTAGE</b>	<b>FINISH</b>	<b>OPTIONS</b>

Enter the order code into the appropriate box above. Note: Philips Gardco reserves the right to refuse a configuration. Not all combinations and configurations are valid. Refer to notes below for exclusions and limitations. For questions or concerns, please consult the factory.

**PREFIX**

- SCBEH19**     Direct Mount Box
- STSEH19**     Short Trunnion Mount
- STLEH19**     Long Trunnion Mount

**DISTRIBUTION**

- 1**     Type I, Horizontal Lamp
- 3**     Type III, Horizontal Lamp
- FM**    Type IV, Forward Throw, Horizontal Lamp
- Q**     Type V, Horizontal Lamp

**WATTAGE**

<i>Pulse Start MH Magnetic Ballast</i>	<b>250PSMH</b> ⓔ <b>320PSMH</b> ⓔ	<b>350PSMH</b> ⓔ <b>400PSMH</b> ⓔ
<i>Standard MH Magnetic Ballast*</i>	<b>250MH*</b>	<b>400MH*</b>
<i>High Pressure Sodium Magnetic Ballast</i>	<b>200HPS</b> <b>250HPS</b>	<b>400HPS</b>
* 250MH and 400MH not available for sale in the United States.		
<div style="display: flex; align-items: center;"> <div style="border: 1px solid black; border-radius: 50%; width: 20px; height: 20px; display: flex; align-items: center; justify-content: center; margin-right: 5px;">E</div> <div style="font-size: x-small;">Wattages marked with Circle "E" meet federal energy efficiency standards applicable to 150 watt through 500 watt metal halide luminaires only.</div> </div>		

**VOLTAGE**

- 120**     **QUAD**
- 208**     120/208/240/277
- 240**     wired to 277V.
- 277**



# Form 10 Garage

## SCBEH / STSEH / STLEH 19"

### FINISH

- BLA** Black Anodized
- BRA** Bronze Anodized
- NA** Natural Aluminum Anodized
- OC** Optional Color Paint  
*Specify RAL designation, ex: OC-RAL7024.*
- SC** Special Color Paint  
*Specify. Must supply color chip.*

### OPTIONS

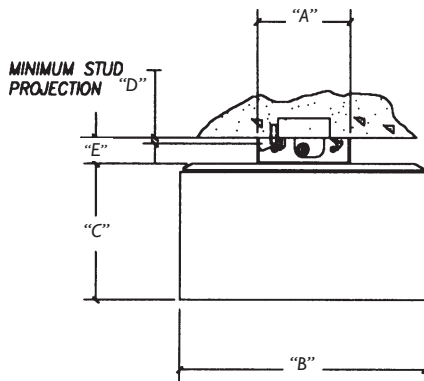
- F** Fusing
- VR** Vandal resistant Door Assembly *Includes Poly Lens.*
- QS<sup>1</sup>** Quartz Standby
- QST<sup>1</sup>** Quartz Standby - Timed Delay
- Q924<sup>1</sup>** Quartz Emergency
- QT924<sup>1</sup>** Quartz Emergency - Timed Delay

1. 100W quartz lamp maximum.

### DIMENSIONS

#### SCB Style: Quick-Mount Box

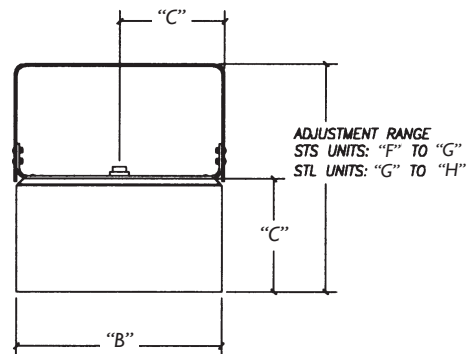
Each SCB style luminaire is supplied with a 14 gauge galvanized steel junction box with integral slots to permit 90° rotation capability for luminaire alignment. This ceiling mounted steel box may attach directly to a 4" octagonal recessed outlet box (by others), but recommended mounting is directly to the ceiling using 3/8" studs (by others) through (4) 7/16" diameter holes provided. Box is provided with (4) knockouts for 1/2" and 3/4" surface conduit. A 16 gauge galvanized steel mounting bracket attaches to the luminaire top pan and provides hinging slots that permit servicing of the unit. Four (4) tamper-resistant mounting screws lock the luminaire to the box in a fixed position.



#### STS & STL Style: Trunnion-Mounted

All Gardco STS and STL style luminaires are designed to mount to concrete ceiling with a die formed anodized aluminum trunnion bracket assembly. Trunnion assembly permits six (6) one inch incremental mounting height adjustments. A 1/2" I.P.S. weatherproof die cast aluminum hub with integral O-ring is located on the top pan for field attachment of rigid or flexible conduit (by others).

TRUNNION BRACKET ASSEMBLY: Upper and lower trunnions fasten together with 1/4"-20 carriage bolts and provide vertical height adjustment. Upper trunnion has a central 17/32" diameter hole providing pivotal alignment and two (2) 13/32" diameter outboard mounting holes insuring rigid ceiling attachment.



Dimension	Inches	Centimeters
A	7	17.78
B	19	48.26
C	10	25.4
D	0.5	1.27
E	2	5.08
F	15	38.1
G	21	53.34
H	27	68.58

## SPECIFICATIONS

**GENERAL:** Each Philips Gardco Square Form Ten Garage is a sharp cutoff luminaire for high intensity discharge lamps. Units are designed with half cube proportions. Internal components are totally enclosed, dust tight and corrosion resistant. No venting of optical system or electrical components is required or permitted. Luminaires are completely assembled with no disassembly required for installation. Lamping requires no lifting or hinging the luminaire housing, disturbing wiring or exposing uninsulated live parts.

**HOUSING:** Sides are composed of precisely mitered, anodized aluminum extrusions. Top pans are press-formed with a returned perimeter flange that interlocks with housing sides. Pressure injected silicone provides a continuous weathertight seal at all miters and points of material transition.

**LENS:** Mitered, extruded anodized aluminum door frame retains the optically clear, heat and impact resistant tempered flat glass or sag thermoplastic in a sealed manner using hollow section, high compliance, memory retentive extruded silicone rubber. Concealed stainless steel latch and hinges permit easy toolless access to the luminaire.

**OPTICAL SYSTEMS:** The segmented Form Ten optical system is a homogeneous sheet aluminum, electrochemically brightened, anodized and sealed. The segmented reflectors are set in faceted arc tube image duplicator patterns to achieve Types I (1), III (3), IV (FM), and V (Q) distributions. The mogul lampholder is glazed porcelain with a nickel plated screw shell with lamp grip – all securely attached to the reflector assembly.

**ELECTRICAL:** Each high power factor ballast is the separate component type, capable of providing reliable lamp starting down to -20° F. The ballast is mounted and secured within the luminaire, above the reflector system. Component-to-component wiring within the luminaire will carry no more than 80% of rated current and is listed by UL for use at 600 VAC at 150°C or higher. Plug disconnects are listed by UL for use at 600 VAC, 15A or higher.

**FINISH:** Housings are standard with natural, bronze or black Aluminum Association Architectural Class I anodized finish applied after fabrication.

**LABELS:** All fixtures bear UL or CUL (where applicable) Wet Location labels.

**WARRANTY:** Philips Gardco luminaires feature a 5 year limited warranty. See Warranty Information on [www.sitelighting.com](http://www.sitelighting.com) for complete details and exclusions. Polycarbonate lenses carry a 1 year warranty only.

**FULL CUTOFF PERFORMANCE:** Full cutoff performance means a luminaire distribution where zero candela intensity occurs at an angle at or above 90° above nadir. Additionally, the candela per 1000 lamp lumens does not numerically exceed 100 (10 percent) at a vertical angle of 80° above nadir. This applies to all lateral angles around the luminaire.

**CUTOFF PERFORMANCE:** Cutoff performance means a luminaire distribution where the candela per 1000 lamp lumens does not numerically exceed 25 (2.5 percent) at an angle at or above 90° above nadir, and 100 (10 percent) at a vertical angle of 80° above nadir. This applies to all lateral angles around the luminaire.

1611 Clovis Barker Road, San Marcos, TX 78666

(800) 227-0758 (512) 753-1000 FAX: (512) 753-7855 [sitelighting.com](http://www.sitelighting.com)

© 2011 Koninklijke Philips Electronics N.V. All Rights Reserved.

Philips Gardco reserves the right to change materials or modify the design of its product without notification as part of the company's continuing product improvement program.

79115-80/0511

**PHILIPS**

