

Job:  
 Type:  
 Notes:

# Poles

## 4" and 5" UniPost Straight Square Aluminum

Philips Gardco UniPost Straight Square Aluminum poles add whole new dimensions to a lighting pole. The unique vertical channels make an elegant visual statement, one that can be enhanced with optional decorative color striping. The integrated channel bracket system makes mounting signs, markers, banner arms, and other desired visuals very simple. UniPost redefines both the form and function of a light pole.



**PREFIX**      **HEIGHT**      **DRILLING**      **FINISH**      **OPTIONS**

Enter the order code into the appropriate box above. Note: Gardco reserves the right to refuse a configuration. Not all combinations and configurations are valid. Refer to notes below for exclusions and limitations. For questions or concerns, please consult the factory.

**PREFIX**

- UPS4
- UPS5

**HEIGHT**

HEIGHT	8'	10'	12'	14'	16'	18'	20'	25'
UPS4	•	•	•	•	•	•	•	
UPS5		•	•	•	•	•	•	•

Combinations of pole and height marked with a "Dot" are available for ordering.

**DRILLING**

- D1      1 Way
- D2      2 Way
- D2@90      2 Way at 90°
- D3      3 Way
- D4      4 Way
- T2      2 3/8" OD Tenon

**FINISH**

- BRP      Bronze Paint
- BLP      Black Paint
- WP      White Paint
- NP      Natural Aluminum Paint
- OC      Optional Color Paint  
Specify Optional Color or RAL ex: OC-LGP or OC-RAL7024.
- SC      Special Color Paint  
Specify. Must supply color chip.

**OPTIONS**

- GC204<sup>1</sup>      Grip Clamp - Set of 2
  - SC202<sup>1</sup>      Span Clamp
  - DSR      Decorative Stripe - Red
  - DSB      Decorative Stripe - Blue
  - DSY      Decorative Stripe - Yellow
  - DSG      Decorative Stripe - Green
  - DSW      Decorative Stripe - White
- 1. If more than one clamp or clamp set is required with a pole, indicate quantity following option. Example: GC204-2 indicates 2 clamp sets per pole.*



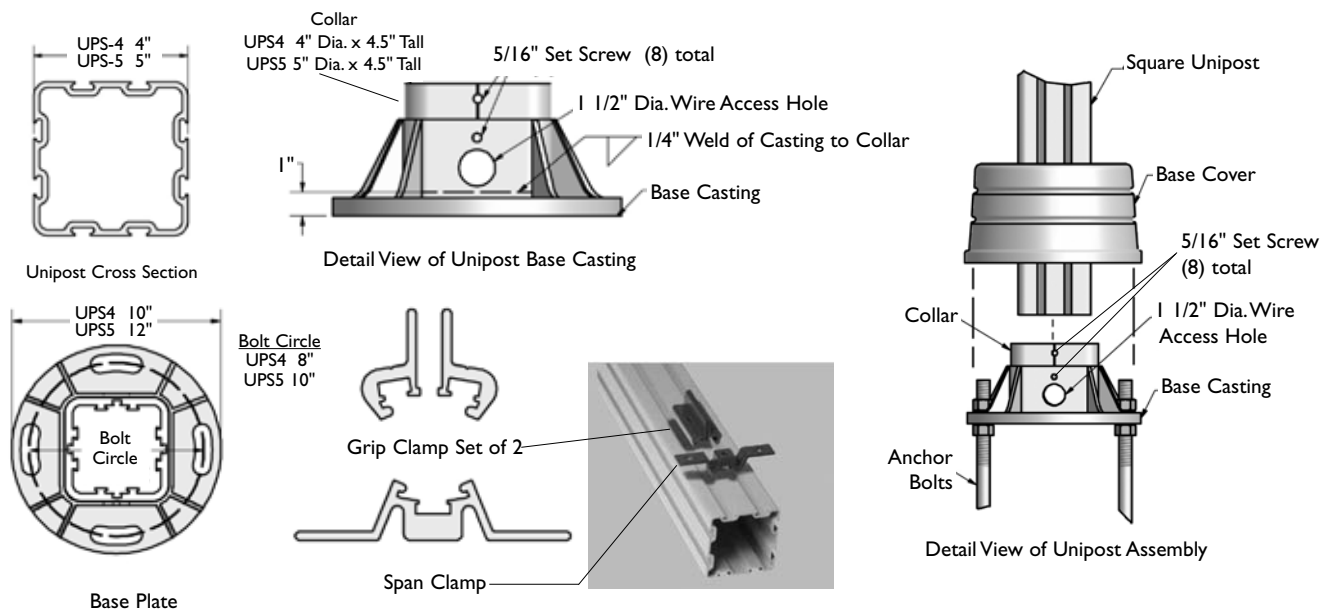
### POLE DATA

CATALOG NUMBER	POLE SIZE	MAXIMUM LUMINAIRE LOADING <sup>2</sup>			ANCHOR BOLT DATA <sup>3</sup>	
		100 MPH EPA-FT <sup>2</sup>	90 MPH EPA-FT <sup>2</sup>	80 MPH EPA-FT <sup>2</sup>	BOLT CIRCLE (inches)	BOLT SIZE (inches)
UPS4-8	8' 0"	12.4	16.3	20.1	8	3/4 x 24 x 4
UPS4-10	10' 0"	8.6	11.1	14.8	8	3/4 x 24 x 4
UPS4-12	12' 0"	6.1	8.4	11.4	8	3/4 x 24 x 4
UPS4-14	14' 0"	5.1	6.8	9.5	8	3/4 x 24 x 4
UPS4-16	16' 0"	2.6	3.8	5.5	8	3/4 x 24 x 4
UPS4-18	18' 0"	1.9	2.9	4.2	8	3/4 x 24 x 4
UPS4-20	20' 0"	-	1.8	2.9	8	3/4 x 24 x 4
UPSS-10	10' 0"	19.5	28.5	40.0	10	3/4 x 24 x 4
UPSS-12	12' 0"	15.6	22.5	31.4	10	3/4 x 24 x 4
UPSS-14	14' 0"	12.5	17.8	24.5	10	3/4 x 24 x 4
UPSS-16	16' 0"	10.0	14.0	19.1	10	3/4 x 24 x 4
UPSS-18	18' 0"	8.0	11.1	14.9	10	3/4 x 24 x 4
UPSS-20	20' 0"	5.9	8.5	12.1	10	3/4 x 24 x 4
UPSS-25	25' 0"	2.1	4.2	7.0	10	3/4 x 24 x 4

2. **Warning:** Additional wind loading, in terms of EPA, from banners, cameras, floodlights and other accessories attached to the pole, must be added to the luminaire(s) EPA before selecting the pole with the appropriate wind load capability.

3. Factory supplied template must be used when setting anchor bolts. Philips Gardco will not honor any claim for incorrect anchorage placement resulting from failure to use factory supplied templates.

### DIMENSIONS



**NOTE:** Factory supplied template must be used when setting anchor bolts. Philips Gardco will not honor any claim for incorrect anchorage placement from failure to use factory supplied templates.

### SPECIFICATIONS

All aluminum alloys shall comply with metallurgical and mechanical properties set forth in the Aluminum Association Standards.

**POLE SHAFT:** The shaft shall be extruded from all new seamless 6063 alloy aluminum tubing and is heat treated to produce a T6 temper.

**ANCHOR BASE:** The anchor base shall be cast from A356 alloy aluminum and heat treated to produce a T6 temper. The shaft is telescoped into the base casting and collar and mechanically fastened with eight (8) 5/16" set screws.

**ANCHOR BOLTS:** Four (4) properly sized steel hot dipped galvanized anchor bolts, each furnished with two (2) regular hex nuts and two (2) flat washers, are provided per pole, unless otherwise specified. ASTM F1554 grade 55 anchor bolts are provided standard.

**BASE COVER:** A one piece spun aluminum base cover is provided standard.

**POLE TOP CAP:** Each pole assembly is provided with a removable pole top cap.

**FINISH:** Poles are provided with an electrostatically applied, thermally cured TGIC polyester powdercoat finish.

### GENERAL POLE INFORMATION

**DESIGN:** The poles as charted are designed to withstand dead loads and predicted dynamic loads developed by variable wind speeds with an additional 30% gust factor under the following conditions:

The charted weights include luminaire(s) and/or mounting bracket(s).

The wind velocities are based on 10 mph increments from 80 mph through 100 mph. Poles to be located in areas of known abnormal conditions may require special consideration. For example: coastal areas, airports and areas of special winds.

Poles are designed for ground mounted applications. Poles mounted on structures (such as buildings and bridges) may also necessitate special consideration requiring Philips Gardco's recommendation.

Height correction factors and drag coefficients are applied to the entire structure. An appropriate safety factor is maintained based on the minimum yield strength of the material incorporated in the pole.

**WARNING:** This design information is intended as a general guideline only. The customer is solely responsible for proper selection of pole, luminaire, accessory and foundation under the given site conditions and intended usage. The addition of any items to the pole, in addition to the luminaire, will dramatically impact the EPA load on that pole. It is strongly recommended that a qualified professional be consulted to analyze the loads given the user's specific needs to ensure proper selection of the pole, luminaire, accessories, and foundation. Philips Gardco assumes no responsibility for such proper analysis or product selections. **Failure to insure proper site analysis, pole selection, loads and installation can result in pole failure, leading to serious injury or property damage.**

**GENERAL INFORMATION:** Mounting height is the vertical distance from the base of the lighting pole to the center of the luminaire arm at the point of luminaire attachment. Twin arms as charted are oriented at 180° with respect to each other. For applications of two (2) arms at 90° or other multiple arm applications, consult the factory.

**WARRANTY:** Philips Gardco poles feature a 1 year limited warranty. See Warranty Information on [www.sitelighting.com](http://www.sitelighting.com) for complete details and exclusions.