

# INSTALLATION INSTRUCTIONS

## FOR WS (WALL MOUNT, SURFACE CONDUIT) OPTION

### 121 SCNCE



GARDCO LIGHTING  
1611 Clovis Barker Road  
San Marcos, TX 78666  
www.sitelighting.com

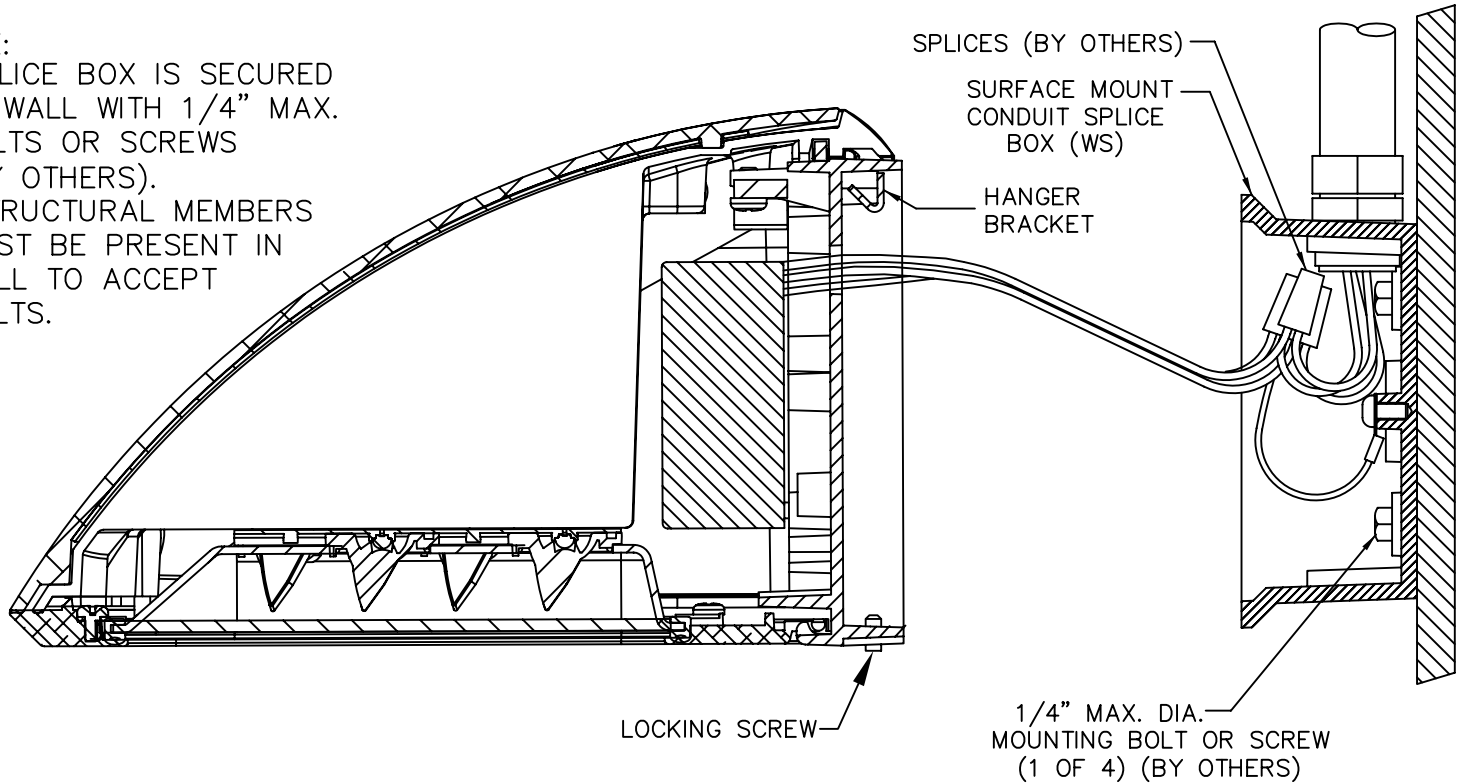
PN# A819271 REV  
SHEET 1 OF 2

© COPYRIGHT 2008 GARDCO LIGHTING

**IMPORTANT:** READ ALL INSTRUCTIONS BEFORE PERFORMING ANY WORK.  
BE SURE ALL POWER IS OFF PRIOR TO INSTALLING LUMINAIRE.

**WARNING:** LUMINAIRE MUST BE GROUNDED IN ACCORDANCE WITH  
APPROPRIATE CODES. FAILURE TO DO SO MAY RESULT IN  
SERIOUS INJURY.

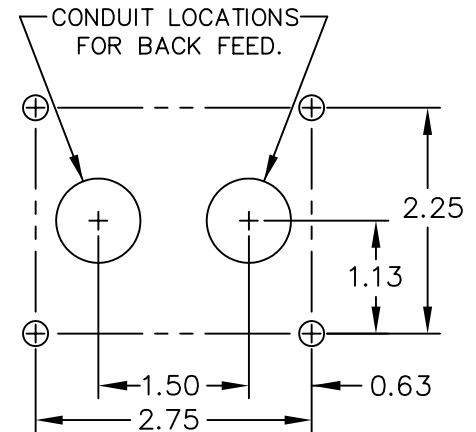
NOTE:  
SPLICE BOX IS SECURED  
TO WALL WITH 1/4" MAX.  
BOLTS OR SCREWS  
(BY OTHERS).  
STRUCTURAL MEMBERS  
MUST BE PRESENT IN  
WALL TO ACCEPT  
BOLTS.



1. DETERMINE WHICH HUB(S) IN SURFACE MOUNT  
SPLICE BOX ARE TO BE USED IN THIS INSTALLATION.  
INSTALL AND SEAL ELECTRICAL FITTING(S) IN HUB(S).  
INSTALL AND SEAL PLUG(S) IN UNUSED HUB(S).  
INSTALL CONDUIT SECTION(S) INTO FITTINGS AS  
REQUIRED.

2. DETERMINE MOUNTING LOCATION OF SPLICE BOX.  
APPLY A BEAD OF SEALANT AROUND EACH  
MOUNTING HOLE ON THE OUTSIDE OF THE BOX.  
FOR INSTALLATIONS WHERE CONDUIT ENTERS  
THROUGH THE BACK OF THE SPLICE BOX,  
APPLY A BEAD OF SEALANT ON THE OUTSIDE  
OF THE BOX AROUND THE CONDUIT HOLE USED.  
SECURE BOX TO WALL WITH 1/4" (MAX.) BOLTS  
(BY OTHERS) MAKING SURE BOX IS LEVEL.

3. COMPLETE CONDUIT INSTALLATION AND ROUTE  
SUPPLY WIRES INTO SPLICE BOX.



MOUNTING BOLT PATTERN

# INSTALLATION INSTRUCTIONS

## FOR WS (WALL MOUNT, SURFACE CONDUIT) OPTION

### 121 SCONCE



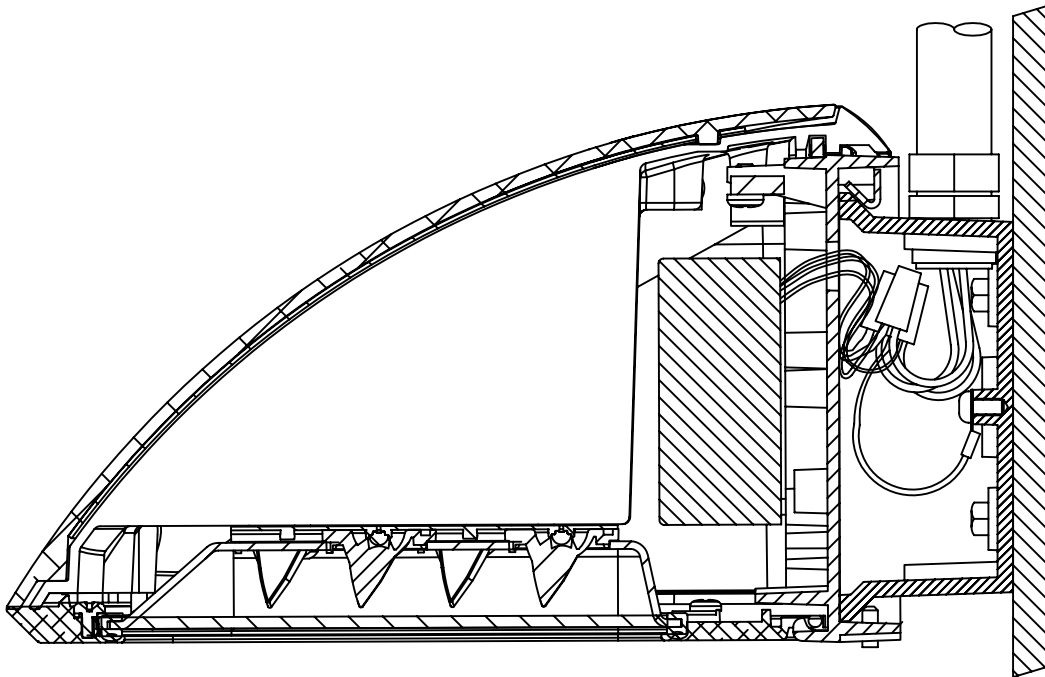
GARDCO LIGHTING  
1611 Clovis Barker Road  
San Marcos, TX 78666  
www.sitelighting.com

PN# A819271 REV  
SHEET 2 OF 2

© COPYRIGHT 2008 GARDCO LIGHTING

4. DISCARD MOUNTING BRACKET SUPPLIED WITH LUMINAIRE.
5. MAKE ELECTRICAL CONNECTIONS. LUMINAIRE LINE TO SUPPLY LINE, COMMON TO COMMON AND GROUND TO GROUND INCLUDING SPLICE BOX GROUND.
6. PLACE SPLICES AND EXCESS WIRE IN SPLICE BOX. CAREFULLY ENGAGE HANGER BRACKET TO SPLICE BOX BEING CAREFUL NOT TO PINCH WIRES. ALLOW LUMINAIRE TO REST AGAINST BOX. TIGHTEN LOCKING SCREWS.

NOTE: LENS FRAME ASSEMBLY IS REMOVABLE BY OPENING PARTIALLY, COMPRESSING RETAINING CLIPS WITH HINGE END OF FRAME AND PULLING FORWARD.



FIXTURE INSTALLED  
ON WS OPTION