

INSTALLATION INSTRUCTIONS

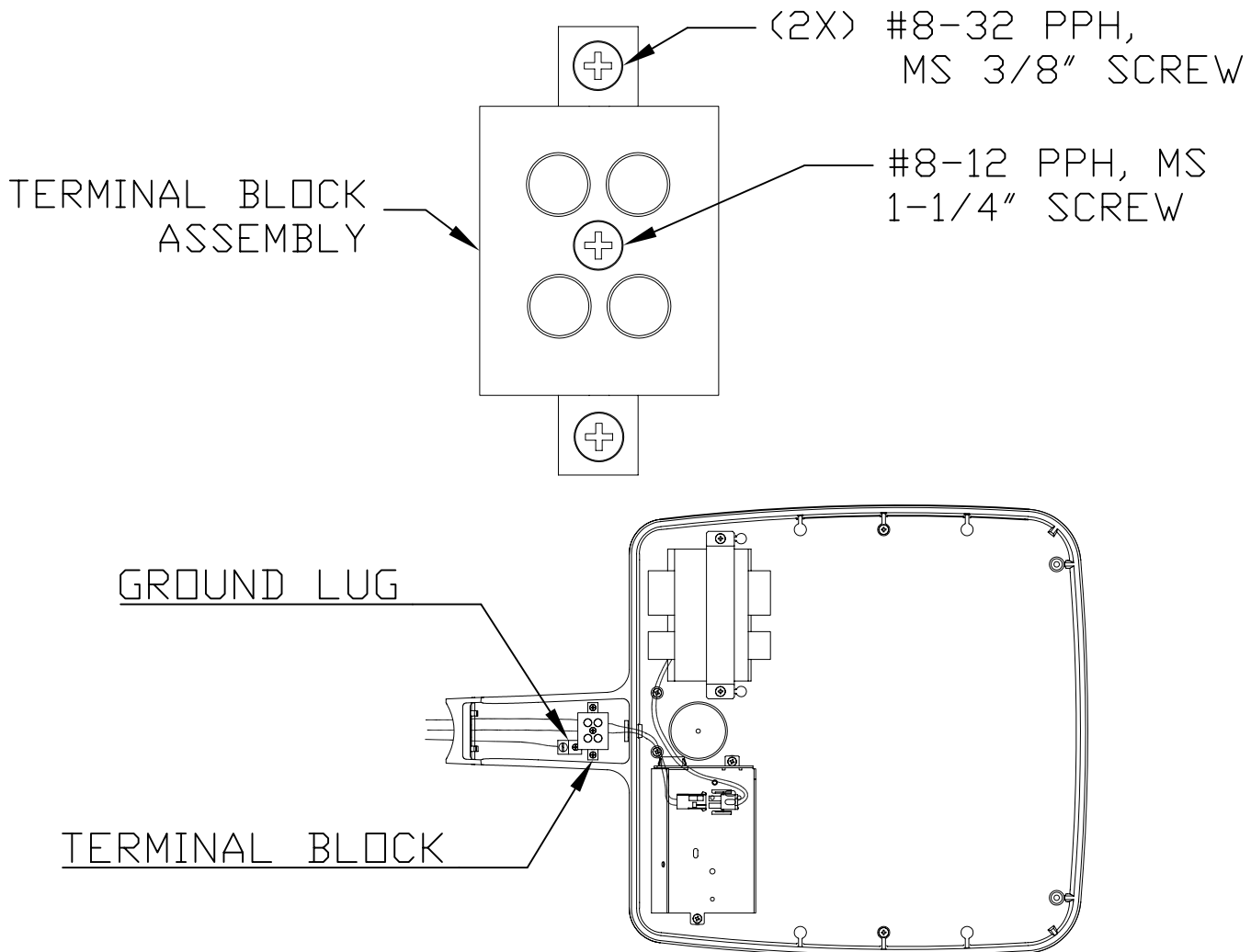


GARDCO LIGHTING
1611 Clovis Barker Road
San Marcos, TX 78666
www.sitelighting.com

PROJECT AVA, AVV & AVR WITH TERMINAL BLOCK

PN # A819229 REV
SHEET 1 OF 1
© COPYRIGHT 2008 GARDCO LIGHTING

**IMPORTANT: READ ALL INSTRUCTIONS BEFORE PERFORMING ANY WORK.
BE SURE ALL POWER IS OFF PRIOR TO INSTALLING LUMINAIRES.**



1. To install terminal block mounting bracket, slide terminal block assy into 2" x 5" arm and secure by tightening (2X) #8-32 screws.
2. Connect field wires & luminaire wires to terminal block.
Connect grounding wire to ground lug.
3. Connect supply and ground wires to luminaire leads.
Make wire connections per NEC or applicable local codes.

NOTE: IF BALLAST IS NOT WIRED TO THE DESIRED VOLTAGE, RE-CONNECT TO THE CORRECT VOLTAGE AND BUNDLE WIRES AT THE ORIGINAL LOCATION. INSULATE BALLAST LEAD PREVIOUSLY CONNECTED.